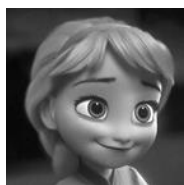


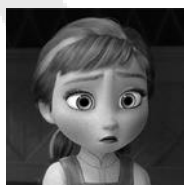
Part 1 Vocabulary Preview *Before you watch the video, try to guess what the underlined expressions mean from context clues.*

1. The party started getting out of hand when too many people came.
2. The witch put a curse on the princess because she was so beautiful.
3. I know it will be hard to move to a new school, but it is for the best.
4. You need to reduce the amount of money you are spending on clothes. It is too much.

Part 2 Background & Gist



Elsa



Anna

- Anna and Elsa are sisters.
- Their parents are the King and the Queen of Arendelle.
- Elsa has magic powers that allow her to make ice and snow.

As you are watching the video, think about: **How does Anna get injured? How will her injury affect Anna's and Elsa's relationship?**

Part 3 Comprehension *After you watch the video, decide if each statement is true or false.*

1. **T / F** Anna wakes Elsa up because she had a nightmare.
2. **T / F** Elsa accidentally hurts Anna with her magic while they are playing.
3. **T / F** The trolls recommend removing all of Elsa's magic to keep her safe.
4. **T / F** The troll says that the heart is easier to change than the head.
5. **T / F** Elsa was born with her powers.
6. **T / F** The king decides to keep Elsa's powers a secret from everyone except for Anna.
7. **T / F** The troll tells Elsa that fear will be her enemy.
8. **T / F** The king decides to hire more staff to protect Anna and Elsa.

Part 4 Discussion *Discuss these questions with your partner or group.*

1. Who is responsible for Anna's accident? Anna? Elsa? The parents?
2. Her parents decide to deal with Elsa's powers by isolating her. Do you think this is the best way to handle the problem. What would you do if you were her parents?
3. Do you think Elsa would be a fun sister to have? What would be the pros and cons?
4. Would you let your children play with Elsa? Why or why not?
5. What was your relationship like with your siblings (or cousins) when you were young? Was it similar to Anna's and Elsa's relationship? Has it changed a lot as you have gotten older?
6. Did you look up to (admire) your older siblings? Did your younger siblings look up to you? Did they copy you? Did it ever annoy you?
7. Did you and a sibling (or cousin, or best friend) ever have an accident and then lie to your parents about it? Tell the story. Why did you lie? Did you tell them about it later in life?
8. Why do think this movie was so successful?

Part 5 Language Review *Choose the word or expression from the video that best matches the highlighted expressions.*

1. Go play [**alone**].
2. [**Be quiet**]! I'm trying to listen.
3. Elsa, what have you done? This is [**becoming dangerous and uncontrolled**].
4. It was [**not on purpose**]. I'm sorry, Anna!
5. A: But she won't remember I have powers?
B: [**It's the safest, best thing to do.**]
6. We will limit her contact with people, and [**hide her powers**] from everyone except for Anna.

Part 6 Sentence Building Write sentences about the video clip using the words given. You can change the word form or add words, but you cannot change the word order. Use a present time frame (tenses).

E.g. Anna / wake / up / Elsa / middle / night / play

Anna wakes up Elsa in the middle of the night (in order) to play.

1. Elsa / use / magic / create / snow / ice / and / they / build / snowman / together
2. while / they / play / Elsa / accident / hurt / Anna / magic
3. king / queen / rush / room / and / discover / Anna / injure
4. so / they / bring / Anna / troll / who / heal / her / by / remove / memory / Elsa / magic
5. king / confirm / Elsa / born / power / and / they / get / strong
6. leader / troll / warn / Elsa / fear / will / cause / power / become / more / danger
7. king / queen / decide / isolate / Elsa / and / keep / power / hide / everyone / include / Anna

Script **Listening Accuracy** As you listen, 1) find and fix the errors in the script below. 2) Then decide if the expressions in the script have the same meaning or a different meaning from what they say in the video.

Anna: Elsa. Psst! Elsa! Wake up. Wake up. Wake up!

Elsa: **A) Anna, go back to bed.**

Anna: I just can't. The sky is awake, so I'm awake. So, we have to play.

Elsa: **B) Go play alone.**

Anna: Do you want to build a snowman? Come on, come on, come on, come on! Do the magic! Do the magic!

Elsa: Ready?

Anna: Uh-huh. This is amazing!

Elsa: Watch this!

Elsa: **C) Hi, I'm Olaf, and I like warm hugs.**

Anna: I love you, Olaf!

Elsa: Hang on!

Anna: Catch me!

Elsa: Gotcha!

Anna: Again!

Elsa: Wait! Slow down! Anna! Anna! Mama! Papa! No, no... You're okay, Anna. I got you.

King: Elsa, what have you done? **D) This is getting out of hand.**

Elsa: **E) It was on purpose. I'm sorry, Anna!**

Queen: Oh. She's ice cold.

King: I know where we have to go.

King: Please! Help! It's my daughter.

Trolls: It's the king.

Boy: Trolls?

Troll: Shush! I'm trying to listen. Cuties! I'm going to keep you.

Troll: **F) Your Majesty. Born with the powers, or cured?**

King: Born. And they're getting stronger.

Troll: You are lucky it wasn't her heart. The heart is not so easily changed. But the head can be persuaded.

King: **G) Do what you have to.**

Troll: I recommend we remove all magic. Even memories of magic to be safe. But don't worry. **H) I'll remove the fun. She will be okay.**

Elsa: But she won't remember I have powers?

Troll: It's for the best. Listen to me, Elsa. Your power will only grow. There is beauty in it, but also great danger. **I) You must learn to control it. Fire will be your enemy.**

King: No! We'll protect her. She can learn to control it, I'm sure. Until then, we'll lock the gates. We'll reduce the staff. **J) We will limit her contact with people, and keep her powers hidden from everyone except for Anna.**

Answers

Part 3

1. **FALSE** Anna wakes Elsa up because she had a nightmare.
2. **TRUE** Elsa accidentally hurts Anna with her magic while they are playing.
3. **FALSE** The trolls recommend removing all of Elsa's magic to keep her safe.
4. **FALSE** The troll says that the heart is easier to change than the head.
5. **TRUE** Elsa was born with her powers.
6. **FALSE** The king decides to keep Elsa's powers a secret from everyone except for Anna.
7. **TRUE** The troll tells Elsa that fear will be her enemy.
8. **FALSE** The king decides to hire more staff to protect Anna and Elsa.

Part 5

1. Go play [**by yourself**].
2. [**Shush**]! I'm trying to listen.
3. Elsa, what have you done? This is [**getting out of hand**].
4. It was [**an accident**]. I'm sorry, Anna!
5. A: But she won't remember I have powers?
B: [**It is for the best.**]
6. We will limit her contact with people, and [**keep her powers hidden**] from everyone except for Anna.

Part 6

1. Elsa uses (her) magic to create snow and ice, and they build a snowman together.
2. While they are playing, Elsa accidentally hurts Anna with (her) magic.
3. The king and (the) queen rush into the room and discover (that) Anna has been injured.
The king and (the) queen rush into the room and discover (that) Anna is injured.
The king and (the) queen rush into the room and discover (that) Anna's injury.
4. So, they bring Anna to [the/some] trolls, who heal her by removing her memories of Elsa's magic.
5. The king confirms (that) Elsa was born with [the/her] powers and (that) they are getting stronger.
6. The leader of the trolls warns Elsa (that) fear will cause her powers to become more dangerous.
7. The king and (the) queen decide to isolate Elsa and keep her powers hidden from everyone, including Anna.

Script

- A. Anna, go back to sleep. (almost the same meaning)
- B. Go play by yourself. (the same meaning)
- C. Hi, I'm Olaf, and I like warm hugs. (no change)
- D. This is getting out of hand. (no change)
- E. It was an accident. (opposite meaning)
- F. Your Majesty. Born with the powers, or cursed? (different meaning)
- G. Do what you must. (the same meaning)
- H. But don't worry. I'll remove the fun. She will be okay. (opposite meaning)
- I. You must learn to control it. Fire will be your enemy. (different meaning)
- J. We will limit her contact with people, and keep her powers hidden from everyone including Anna. (opposite meaning)